

Part Number:

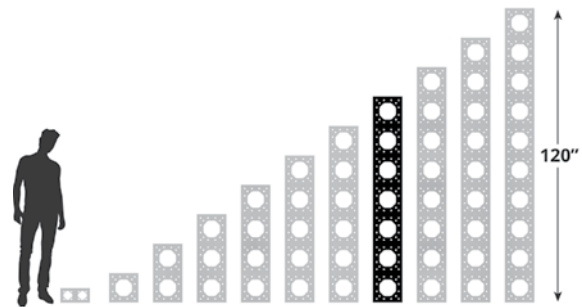
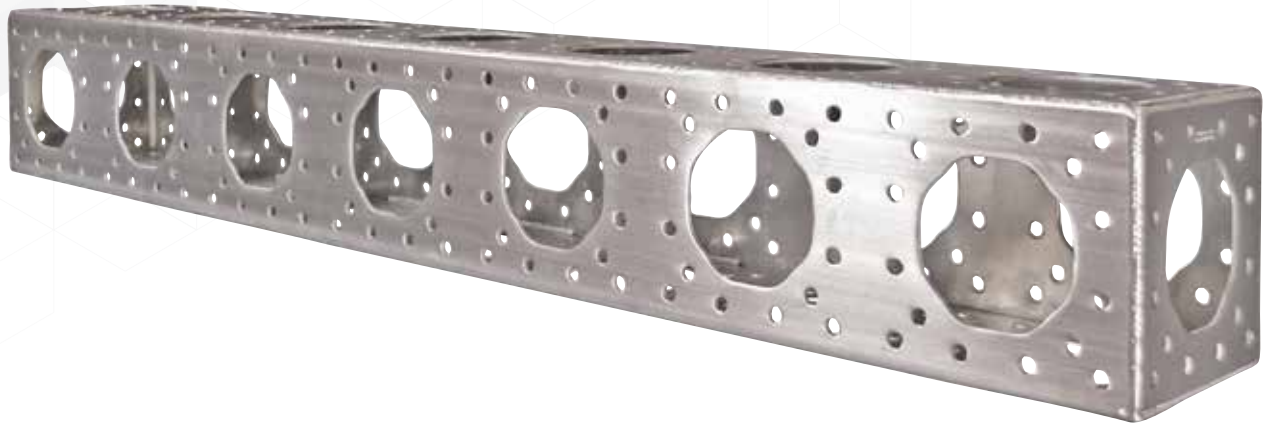
**MT-TR-12-12-084-AL**

Issue Date: 06/21/2017

Series: Truss 12"

# 12" x 12" x 84" Aluminum ModTruss™

Part Number: **MT-TR-12-12-084-AL**



<b>Standard Material:</b>	5052-H32 Aluminum
<b>Standard Finish:</b>	01 - Brush
<b>Available Finish(es):</b>	01, 20-32
<b>Size:</b>	12" x 12" x 84" (304.8mm x 304.8mm x 2133.6mm)
<b>Weight of Truss:</b>	68.05lbs (30.87kg)
<b>Hole Size:</b>	11/16" (17.46mm)
<b>Recommended Hardware:</b>	5/8"-11 Thread Grade 8 Bolt, 2-1/2" Long   5/8" SAE Zinc-Plated Washer   5/8"-11 Thread, Grade 8 Hex Nut (M18 x 2 Thread, 64mm Long, Class 10.9 Bolt   M18, Class 10.9 Washer   M18 x 2 Thread, Class 10.9 Nut)
<b>Recommended Tools:</b>	ModTruss™ Tool Kit 1
<b>Associated Products:</b>	MT-PL-W-12, MT-PL-S-12-24
<b>See more at:</b>	ModTruss.com

ModTruss<sup>INC</sup>



Electrical Hazard



Flammability



In Stock



Made To Order



Customizable



Reusable



Compatible



Serialized & Traceable

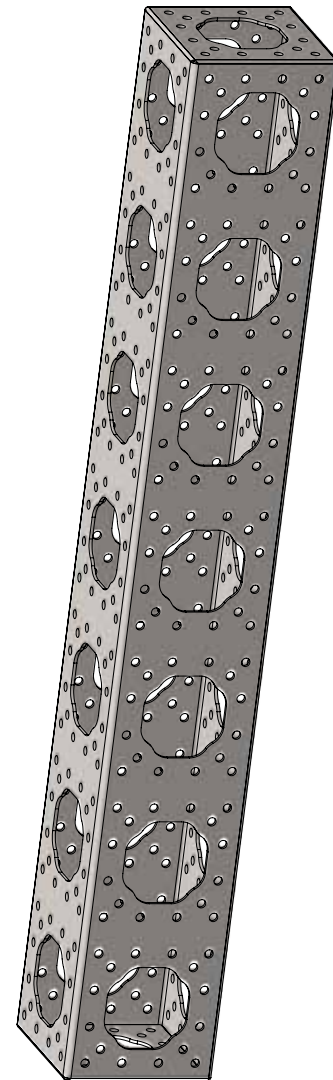
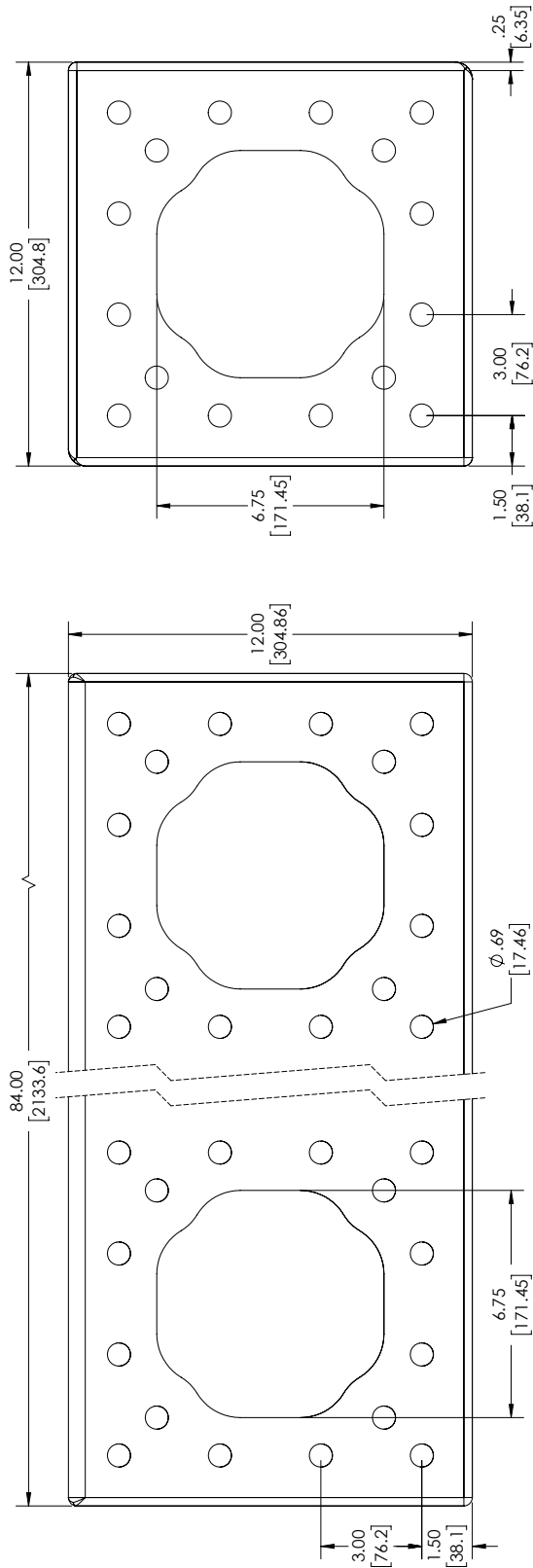
U.S. Patent No. 8,418,425 & other patents pending

Part Number:

**MT-TR-12-12-084-AL**

Issue Date: 06/21/2017

Series: Truss 12"



PRECISION LEVEL - MED. - 4.03 [101]  
BRACKET (1) DIMENSIONS ARE IN MM

RELEASED: 5/12/2015 REVISION: NR

DESCRIPTION:

TRUSS, 12" x 12" x 84"

PART NUMBER:

MT-TR- 12-12-084-AL