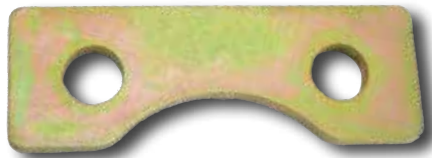
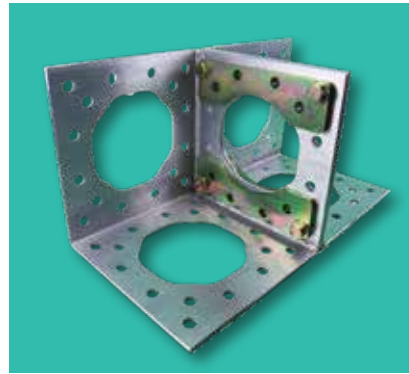


Washer Plates



MT-PL-W-06



MT-PL-W-12

Standard Material	A36 Low Carbon Steel
Standard Finish	11 - Zinc Gold/Yellow
Available Finish(es)	10-12, 20-33* *Powder Coating Not recommended Gold/Yellow color aids in inspection
Hole Size	11/16" (17.46mm)
Recommended Tools	Tool Kit 1
For More Info	www.ModTruss.com

Part # Description	Size	Weight	Recommended Hardware
MT-PL-W-12 <i>12" Washer Plate</i>	3" x 10.25" x 0.5" (76.20mm x 260.35mm x 12.70mm)	3.30lbs (1.50kg)	5/8"-11 Thread Grade 8 Bolt, 2.5" Long 5/8" SAE Zinc-Plated Washer 5/8"-11 Thread, Grade 8 Hex Nut (M16 x 2 Thread, 64mm Long, Class 10.9 Bolt M16, Class 10.9 Washer M16 x 2 Thread, Class 10.9 Nut)
MT-PL-W-06 <i>6" Washer Plate</i>	1.75" x 4.88" x 0.31" (44.45mm x 123.95mm x 7.87mm)	0.55lbs (0.25kg)	5/8"-11 Thread Grade 8 Bolt, 2" Long 5/8" SAE Zinc-Plated Washer 5/8"-11 Thread, Grade 8 Hex Nut (M16 x 2 Thread, 50mm Long, Class 10.9 Bolt M16, Class 10.9 Washer M16 x 2 Thread, Class 10.9 Nut)



Electrical Hazard



Flammability



In Stock



Made To Order



Customizable



Reusable



Compatible*



Serialized & Traceable

*Only 12" Washer Plate | MT-PL-W-12 is compatible with standard Truss

TR

EX

PL

JH

PA

HG

MR

AC

HW

TK

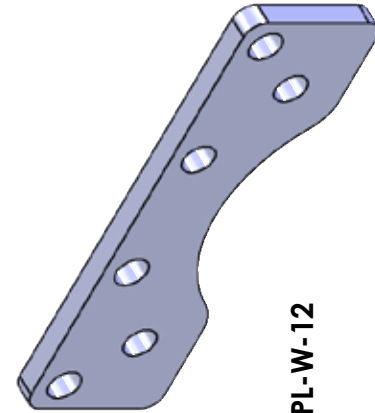
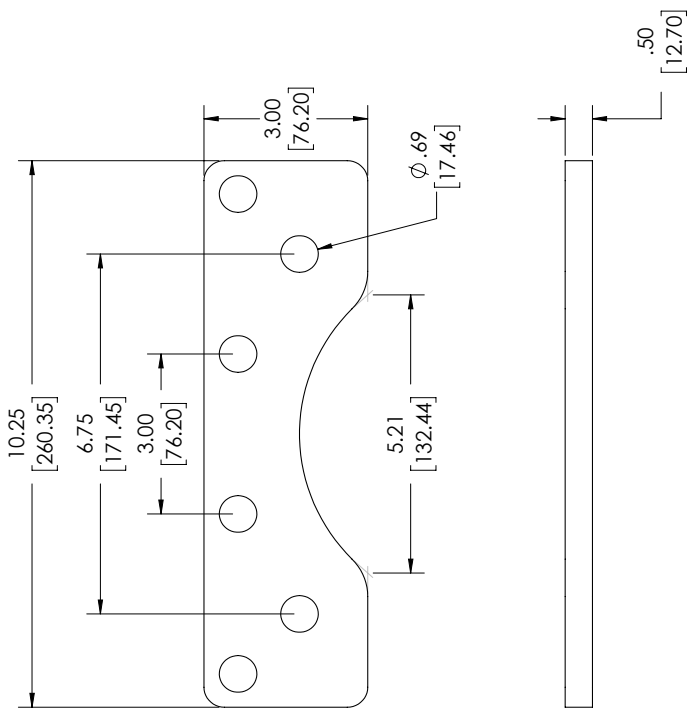
MH

FH

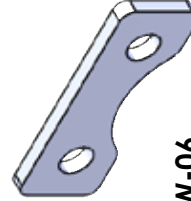
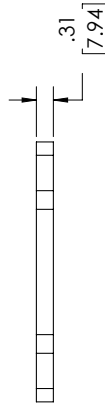
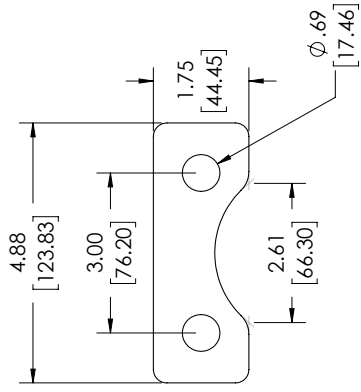
GL

Series | **PL Plates**

Product Number | MT-PL-W-XX



MT-PL-W-12



MT-PL-W-06

	PRECISION LEVEL: MED - ±0.6 [1.57] BRACKET [] DIMENSIONS ARE IN MM
	8/13/2018 REVISION: V1
DESCRIPTION:	WASHER PLATES
PART NUMBER:	MT-PL-W-XX