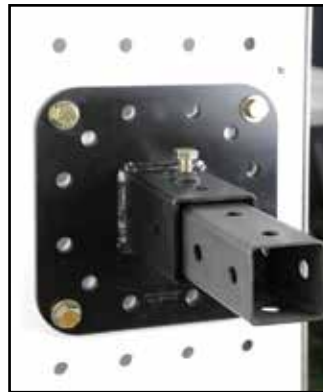


Square Pipe Adapter

Part Number | MT-PA-12-12-0300-SQ-090

Fits both 3" TR and 3" EX



Standard Material	A36 Low Carbon Steel
Standard Finish	10 - Zinc Clear
Available Finish(es)	10-12, 20-33
Size	11.50" x 11.50" x 6.38" (292.10mm x 292.10mm x 161.93mm)
Weight	15.45lbs (247.20kg)
Hole Size	11/16" (17.46mm)
Recommended Hardware	5/8"-11 Thread Grade 8 Bolt, 2" Long 5/8" SAE Zinc-Plated Washer 5/8"-11 Thread, Grade 8 Hex Nut (M16 x 2 Thread, 50mm Long, Class 10.9 Bolt M16, Class 10.9 Washer M16 x 2 Thread, Class 10.9 Nut)
Recommended Tools	Tool Kit 1
For More Info	www.ModTruss.com

- 
 Electrical Hazard
- 
 Flammability
- 
 In Stock
- 
 Made To Order
- 
 Customizable
- 
 Reusable
- 
 Compatible
- 
 Serialized & Traceable

U.S. Patent No. 8,418,425 & other patents pending

TR

EX

PL

JH

PA

HG

MR

AC

HW

TK

MH

FH

GL

TR

Series | PA Pipe Adapter

Product Number | MT-PA-12-12-0300-SQ-090

EX

PL

JH

PA

HG

MR

AC

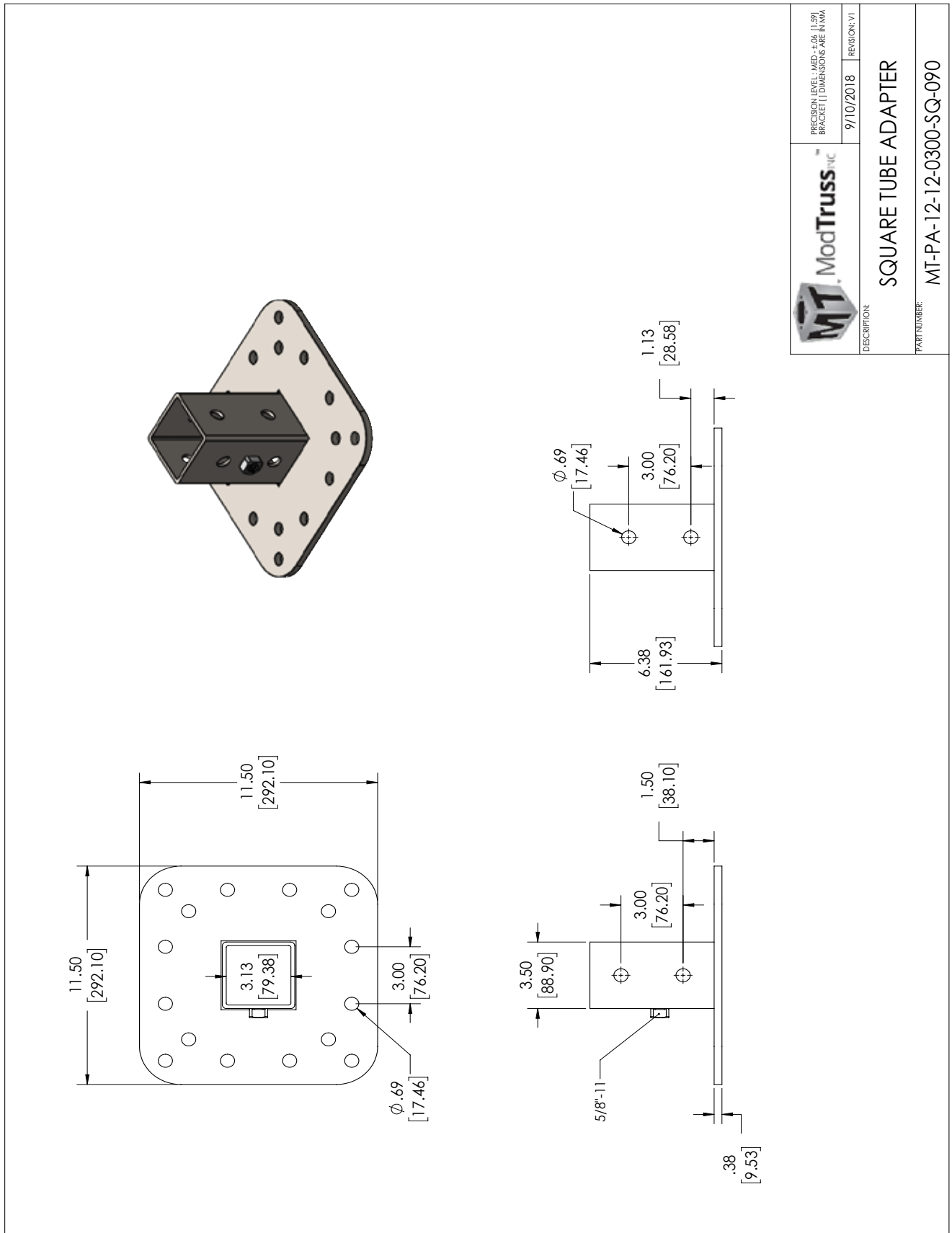
HW

TK

MH

FH

GL



	PRECISION LEVEL: MED. +04 [-1.58] BRACKET DIMENSIONS ARE IN MM	REVISION: V1 9/10/2018
	DESCRIPTION: SQUARE TUBE ADAPTER	
PART NUMBER: MT-PA-12-12-0300-SQ-090		