

Truss Series | 12" Aluminum



DID YOU KNOW?

The bolt hole 6.75" pattern mates with most 12" plated utility truss.



Standard Material	5052-H32 Aluminum
Standard Finish	01 - Brush
Available Finish(es)	01, 20-33
Hole Size	11/16" (17.46mm)
Recommended Hardware	5/8"-11 Thread Grade 8 Bolt, 2.5" Long 5/8" SAE Zinc-Plated Washer 5/8"-11 Thread Grade 8 Hex Nut (M16 x 2 Thread, 65mm Long, Class 10.9 Bolt M16 Class 10.9 Washer M16 x 2 Thread Class 10.9 Nut)
Recommended Tools	Tool Kit 1
For More Info	www.ModTruss.com

Part #	Size	Weight
MT-TR-12-12-006-AL*	12" x 12" x 6" (304.80mm x 304.80mm x 152.40mm)	8.60lbs (3.90kg)
MT-TR-12-12-012-AL	12" x 12" x 12" (304.80mm x 304.80mm x 304.80mm)	13.00lbs (5.90kg)
MT-TR-12-12-015-AL	12" x 12" x 15" (304.80mm x 304.80mm x 381.00mm)	16.60lbs (7.53kg)
MT-TR-12-12-018-AL	12" x 12" x 18" (304.80mm x 304.80mm x 457.20mm)	19.15lbs (8.68kg)
MT-TR-12-12-024-AL	12" x 12" x 24" (304.80mm x 304.80mm x 609.60mm)	22.30lbs (10.12kg)
MT-TR-12-12-036-AL	12" x 12" x 36" (304.80mm x 304.80mm x 914.40mm)	31.55lbs (14.31kg)
MT-TR-12-12-048-AL	12" x 12" x 48" (304.80mm x 304.80mm x 1219.2mm)	40.95lbs (18.57kg)
MT-TR-12-12-060-AL	12" x 12" x 60" (304.80mm x 304.80mm x 1524.0mm)	49.85lbs (22.61kg)
MT-TR-12-12-072-AL	12" x 12" x 72" (304.80mm x 304.80mm x 1828.8mm)	59.15lbs (26.83kg)
MT-TR-12-12-084-AL	12" x 12" x 84" (304.80mm x 304.80mm x 2133.6mm)	68.05lbs (30.87kg)
MT-TR-12-12-096-AL	12" x 12" x 96" (304.80mm x 304.80mm x 2438.4mm)	75.35lbs (34.18kg)
MT-TR-12-12-108-AL	12" x 12" x 108" (304.80mm x 304.80mm x 2743.2mm)	87.00lbs (39.46kg)
MT-TR-12-12-120-AL	12" x 12" x 120" (304.80mm x 304.80mm x 3048.0mm)	95.50lbs (43.32kg)

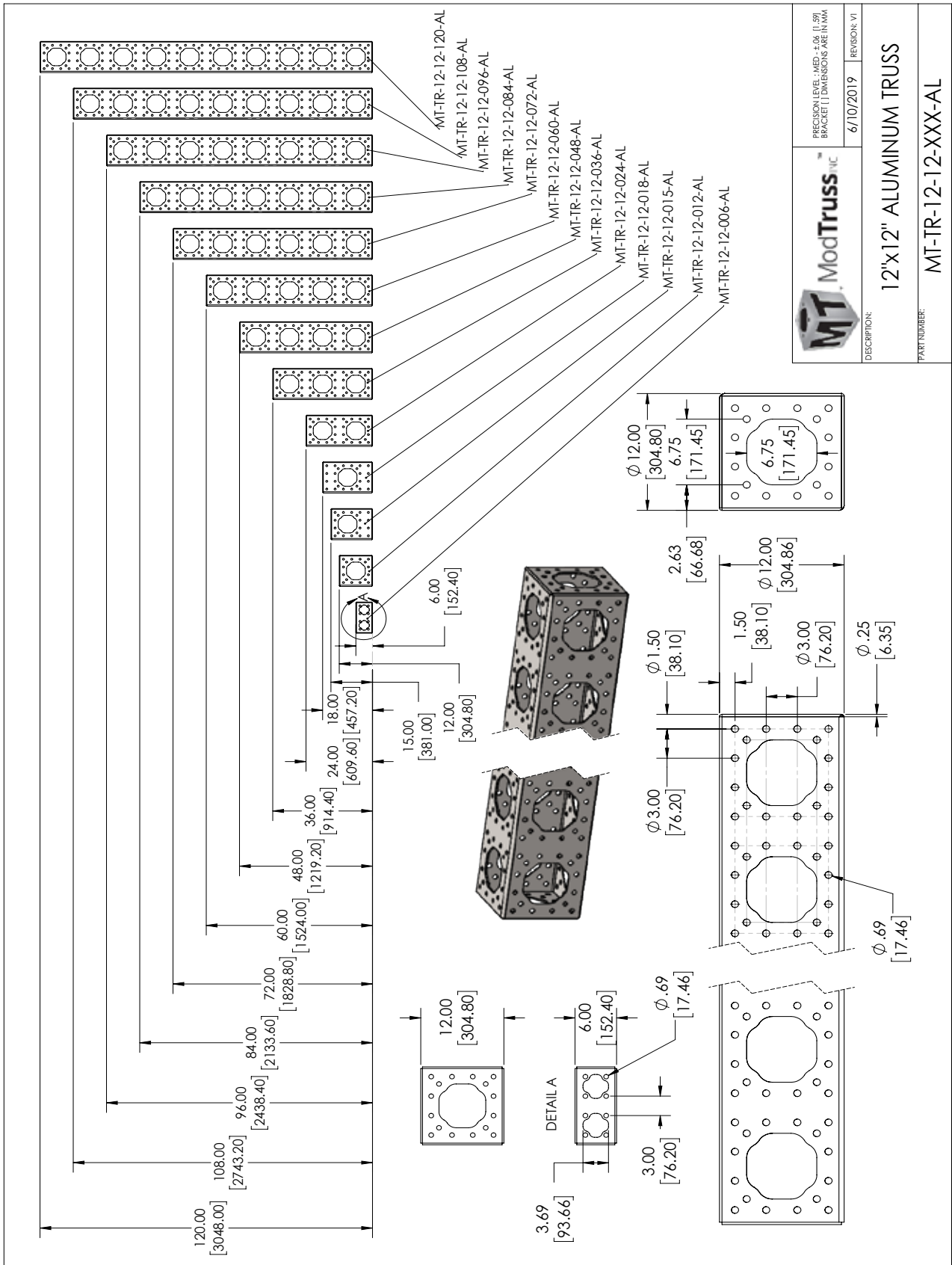
*MT-TR-12-12-006-AL is only compatible with standard Truss on 12" sides, not 6" sides



U.S. Patent No. 8,418,425 & other patents pending

Series | TR Truss 12"

Product Number | MT-TR-12-12-XXX-AL



U.S. Patent No. 8,418,425 & other patents pending