

12" Universal Mount Series



MT-MR-UM-1150-0250-0025-090-XX



MT-MR-UM-1150-1150-0025-090-XX



MT-MR-UM-1150-0550-0025-090-XX

Standard Material	Steel = A36 Low Carbon Steel Aluminum = 5052-H32 Aluminum
Standard Finish	02 - No Finish
Available Finish(es)	N/A
Hole Size	11/16" (17.46mm)
Recommended Hardware	5/8"-11 Thread Grade 8 Bolt, 2" Long 5/8" SAE Zinc-Plated Washer 5/8"-11 Thread, Grade 8 Hex Nut (M16 x 2 Thread, 50mm Long, Class 10.9 Bolt M16, Class 10.9 Washer M16 x 2 Thread, Class 10.9 Nut)
Recommended Tools	Tool Kit 1
For More Info	www.ModTruss.com

Part # <i>Description</i>	Size	Weight
MT-MR-UM-1150-0250-0025-090-ST <i>12" x 3" x 1/2" 90° Universal Mount Steel</i>	11.50" x 2.50" x 0.25" (292.10mm x 63.50mm x 6.35mm)	3.70lbs (1.67kg)
MT-MR-UM-1150-0250-0025-090-AL <i>12" x 3" x 1/2" 90° Universal Mount Aluminum</i>	11.50" x 2.50" x 0.25" (292.10mm x 63.50mm x 6.35mm)	1.25lbs (0.56kg)
MT-MR-UM-1150-0550-0025-090-ST <i>12" x 6" x 1/2" 90° Universal Mount Steel</i>	11.50" x 5.50" x 0.25" (292.10mm x 139.70mm x 6.35mm)	8.25lbs (3.74kg)
MT-MR-UM-1150-0550-0025-090-AL <i>12" x 6" x 1/2" 90° Universal Mount Aluminum</i>	11.50" x 5.50" x 0.25" (292.10mm x 139.70mm x 6.35mm)	2.85lbs (1.29kg)
MT-MR-UM-1150-1150-0025-090-ST <i>12" x 12" x 1/2" 90° Universal Mount Steel</i>	11.50" x 11.50" x 0.25" (292.10mm x 292.10mm x 6.35mm)	17.25lbs (7.82kg)
MT-MR-UM-1150-1150-0025-090-AL <i>12" x 12" x 1/2" 90° Universal Mount Aluminum</i>	11.50" x 11.50" x 0.25" (292.10mm x 292.10mm x 6.35mm)	5.75lbs (2.60kg)



Electrical Hazard



Flammability



In Stock



Made To Order



Customizable



Reusable



Compatible



Serialized & Traceable

U.S. Patent No. 8,418,425 & other patents pending

TR

EX

PL

JH

PA

HG

MR

AC

HW

TK

MH

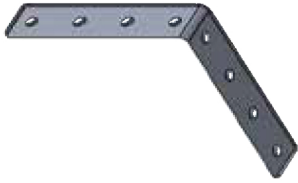
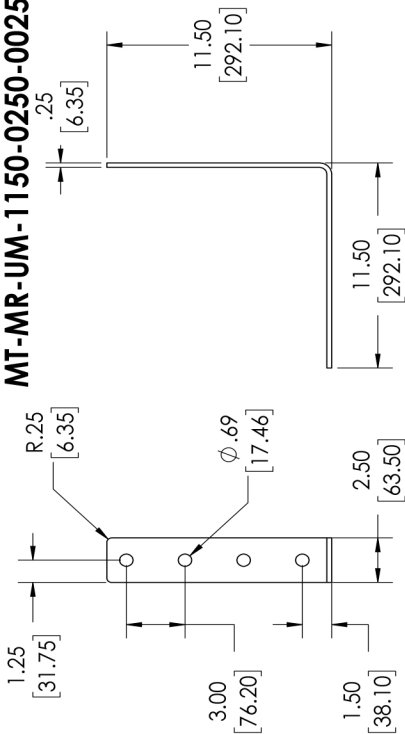
FH

GL

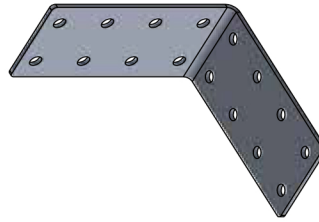
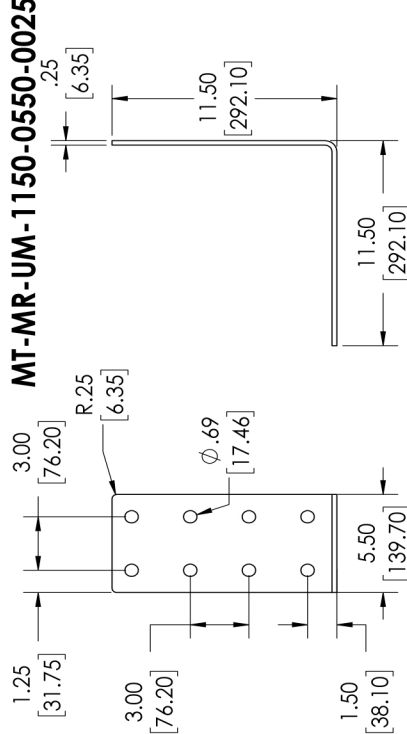
Series | **MR** Motion & Rigging

Product Number | MT-MR-UM-1150-XXXX-0025-090-XX

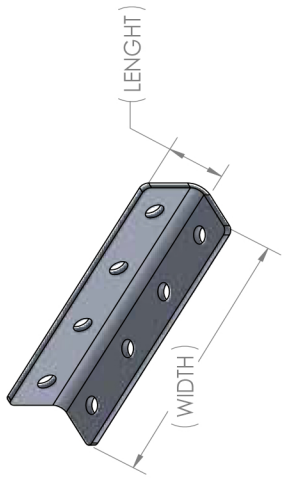
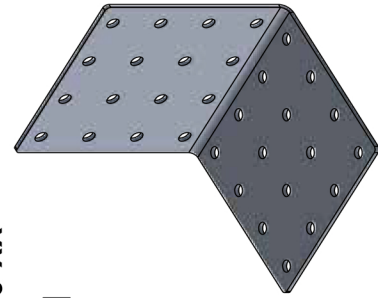
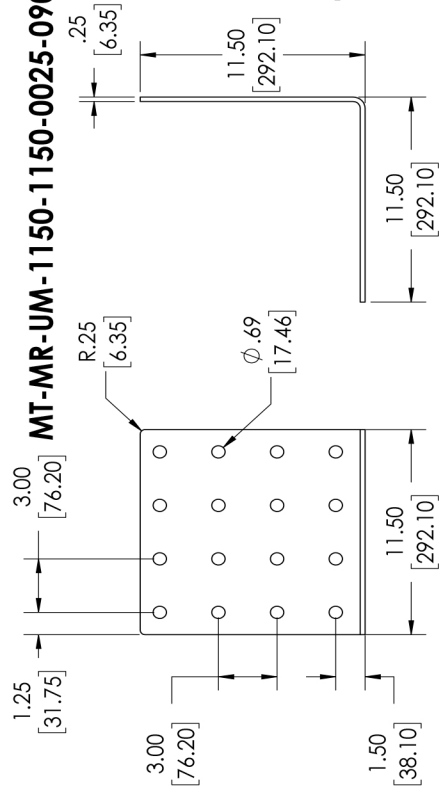
MT-MR-UM-1150-0250-0025-090-XX



MT-MR-UM-1150-0550-0025-090-XX



MT-MR-UM-1150-1150-0025-090-XX



LENGTH X WIDTH	MATERIAL	PART NUMBER
11.5"X2.5"	STEEL	MT-MR-UM-1150-0250-0025-090-ST
11.5"X2.5"	ALUMINUM	MT-MR-UM-1150-0250-0025-090-AL
11.5"X5.5"	STEEL	MT-MR-UM-1150-0550-0025-090-ST
11.5"X5.5"	ALUMINUM	MT-MR-UM-1150-0550-0025-090-AL
11.5"X11.5"	STEEL	MT-MR-UM-1150-1150-0025-090-ST
11.5"X11.5"	ALUMINUM	MT-MR-UM-1150-1150-0025-090-AL

PRECISION LEVEL: MED - ±.06 [1.59]
BRACKET () DIMENSIONS ARE IN MM

8/5/2019 REVISION: V1

DESCRIPTION:
12" UNIVERSAL MOUNT FAMILY

PART NUMBER:
MT-MR-UM-1150-XXXX-0025-090-XX