

ModTruss Extrusion 6" x 12"

Part Number | MT-EX-06-12-XXX-AL*
 *Units in inches



| | |
|-----------------------------|---|
| Standard Material | 6063-T6 Aluminum |
| Standard Finish | 02 - No Finish |
| Available Finish(es) | 50-51 |
| Size | 6" x 12" x User defined length (152.40mm x 304.80mm x User defined length) Max length per piece: 20' |
| Weight | 14.58lbs (6.61kg) *Weight per foot |
| Hole Size | T-Slot: 0.656" x 1.312" (16.67mm x 33.34mm) Keyway (aka Keder Track or Screw-boss): 10.5mm |
| Recommended Hardware | ModTruss Nut Bars ModTruss Insert Nuts 3" Blind Connector - MT-HW-BC-03-03-AS |
| Recommended Tools | Tool Kit 1 6 Hex Key Wrench Cluster - MT-TK-HX-00-0-SAE |
| For More Info | www.ModTruss.com |



Electrical Hazard



Flammability



In Stock



Made To Order



Customizable



Reusable



Compatible



Serialized & Traceable

TR

EX

PL

JH

PA

HG

MR

AC

HW

TK

MH

FH

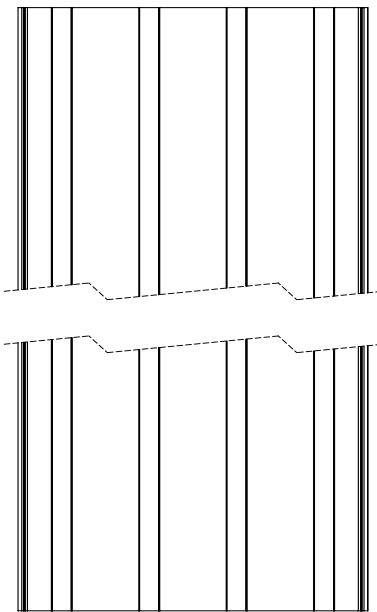
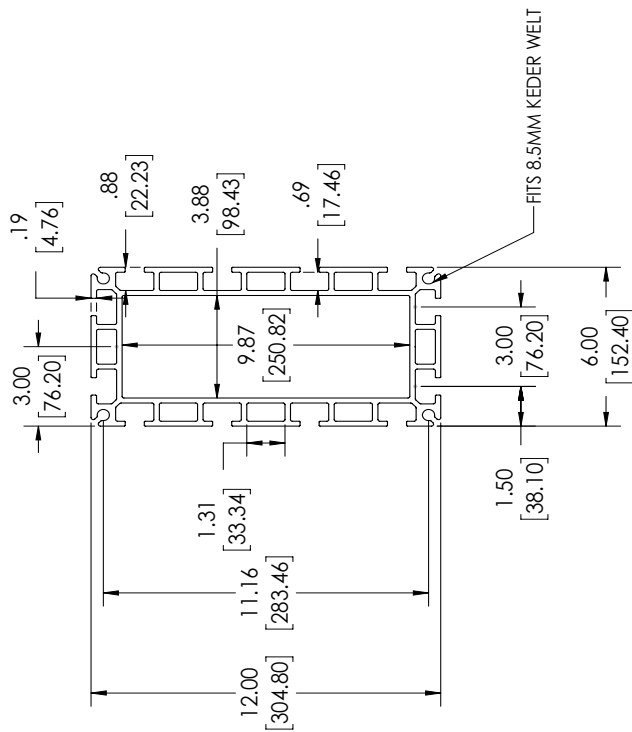
GL

Series | **EX** Extrusion

Product Number | MT-TR-06-12-XXX-AL



| LENGTH | PART NUMBER |
|--------|--------------------|
| 12" | MT-EX-06-12-012-AL |
| 24" | MT-EX-06-12-024-AL |
| 36" | MT-EX-06-12-036-AL |
| 48" | MT-EX-06-12-048-AL |
| 60" | MT-EX-06-12-060-AL |
| 72" | MT-EX-06-12-072-AL |
| 84" | MT-EX-06-12-084-AL |
| 96" | MT-EX-06-12-096-AL |
| 108" | MT-EX-06-12-108-AL |
| 120" | MT-EX-06-12-120-AL |



| | | |
|---|---|---------------------------|
| | REVISION LEVEL: MTD 5.04 (1.58) BRACKET DIMENSIONS ARE IN MM | REVISION: VI 9/18/2018 |
| | DESCRIPTION: 6"x12" EXTRUSION | |
| PART NUMBER: MT-EX-06-12-XXX-AL | | |

Extrusion End Cap 6" x 12"

Part Number | MT-EX-EC-06-12-12-12-090



TR

EX

PL

JH

PA

HG

MR

AC

HW

TK

MH

FH

GL

| | |
|-----------------------------|---|
| Standard Material | A36 Low Carbon Steel |
| Standard Finish | 10 - Zinc Clear |
| Available Finish(es) | 10-12, 20-33 |
| Size | 12" x 12" x 12.38" (304.80mm x 304.80mm x 314.33mm) |
| Weight | 34.85lbs (15.81kg) |
| Hole Size | 11/16" (17.46mm) |
| Recommended Hardware | 5/8"-11 Thread Grade 8 Bolts 5/8" SAE Zinc-Plated Washer 5/8"-11 Thread, Grade 8 Hex Nut ModTruss Nut Bars |
| Recommended Tools | Tool Kit 1 |
| For More Info | www.ModTruss.com |



Electrical Hazard



Flammability



In Stock



Made To Order



Customizable



Reusable



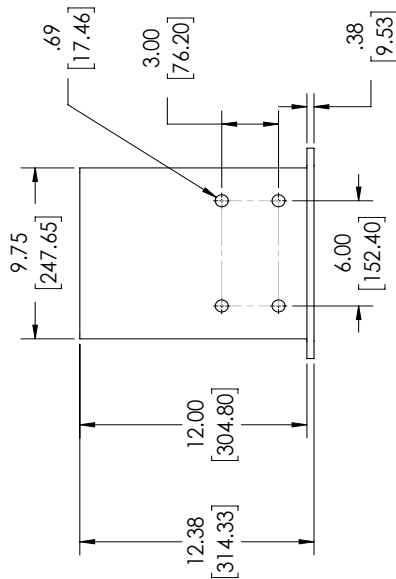
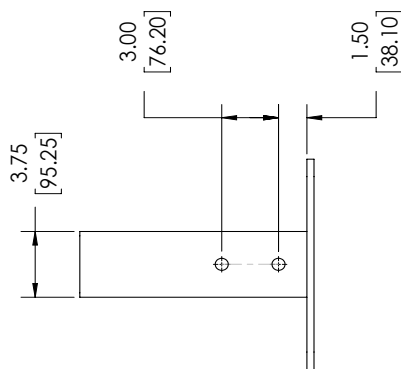
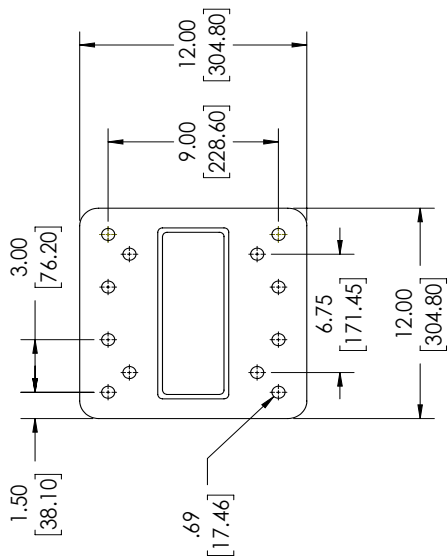
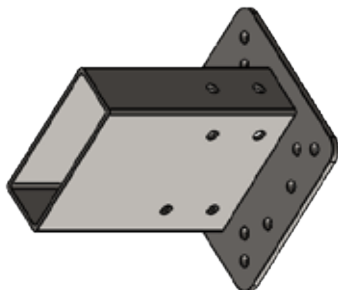
Compatible



Serialized & Traceable

Series | **EX** Extrusion

Product Number | MT-EX-EC-06-12-12-090



| | |
|---|---|
| | PRECISION LEVEL: MED. $\pm .06$ [1.91] BRACKET {} DIMENSIONS ARE IN MM |
| | 8/13/2018 REVISION: VI |
| DESCRIPTION: 6" x 12" EXTRUSION END CAP | |
| PART NUMBER: MT-EX-EC-06-12-12-090 | |