

Extrusion End Cap 6" x 12"

Part Number | MT-EX-EC-06-12-12-12-090



TR

EX

PL

JH

PA

HG

MR

AC

HW

TK

MH

FH

GL

Standard Material	A36 Low Carbon Steel
Standard Finish	10 - Zinc Clear
Available Finish(es)	10-12, 20-33
Size	12" x 12" x 12.38" (304.80mm x 304.80mm x 314.33mm)
Weight	34.85lbs (15.81kg)
Hole Size	11/16" (17.46mm)
Recommended Hardware	5/8"-11 Thread Grade 8 Bolts 5/8" SAE Zinc-Plated Washer 5/8"-11 Thread, Grade 8 Hex Nut ModTruss Nut Bars
Recommended Tools	Tool Kit 1
For More Info	www.ModTruss.com



Electrical Hazard



Flammability



In Stock



Made To Order



Customizable



Reusable



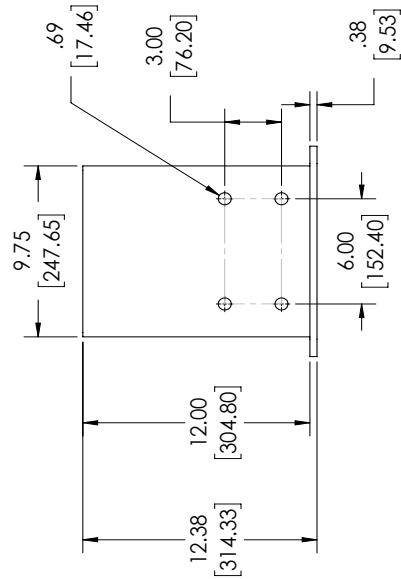
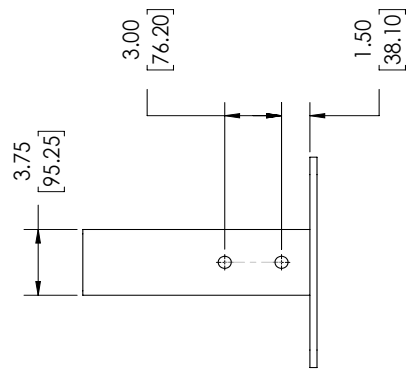
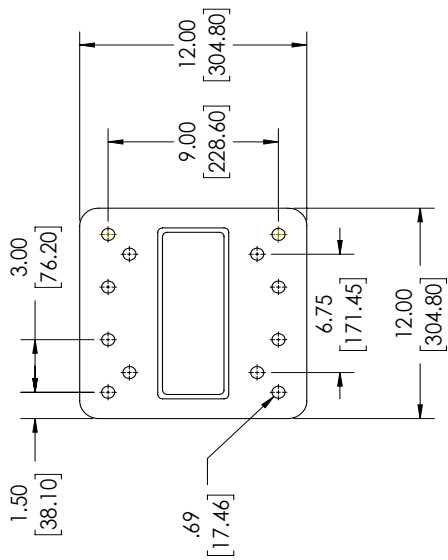
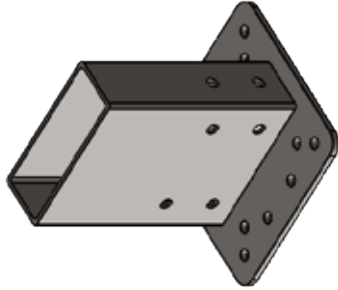
Compatible



Serialized & Traceable

Series | **EX** Extrusion

Product Number | MT-EX-EC-06-12-12-090



	PRECISION LEVEL: MED. $\pm .06$ [1.91] BRACKET () DIMENSIONS ARE IN MM
	8/13/2018 REVISION: V1
DESCRIPTION: 6" x 12" EXTRUSION END CAP	
PART NUMBER: MT-EX-EC-06-12-12-090	